

FINANCIAL INSTITUTIONS



WHO WE ARE

Through our Lloyd's syndicate, we work exclusively with the broker intermediary market, serving some of the world's largest commercial and industrial enterprises. Additionally, we provide reinsurance to leading insurers across the globe.

Data science is at the core of everything we do. The data we use and the models we build to run it, offer genuinely different and useful

perspectives on risk, propelling new understanding to enable better decisions.

A blend of experience and ambitious talent, our dynamic people are the heart of the Inigo experience. Our values of radical simplicity and low ego underpin truly exceptional relationships.

FINANCIAL INSTITUTIONS - OUR UNDERWRITING APPETITE

LIMITS OFFERED

10_M
USD / CAD / GBP / AUD

ATTACHMENT

Primary and
Excess layers

TERRITORY

Worldwide
Focus on US, UK,
Europe, Australia
and Canada



PRODUCTS

- Professional Indemnity
- Directors & Officers
- Crime
- Investment Managers
- Private Equity
- Public Offering of Securities
- Employment Practices Liability
- Fiduciary Liability

APPETITE

We consider all financial institutions including but not limited to:

- Banks
- Insurance Companies
- Investment Managers
- Infrastructure Risks

WHY CHOOSE US?

- Worldwide primary lead underwriting appetite and capability that challenges traditional global carriers
- Market-leading service levels
- Highly experienced claims team and service
- Single, central and nimble underwriting platform
- Technical capability and empowered underwriting decisions
- Active client engagement and the ability to travel
- Long-term strategic underwriting approach
- Real-time data & analytics supporting stable and consistent underwriting
- **We aim to say yes**

OUR CLAIMS PHILOSOPHY

We believe a high-quality claims experience should offer more than promises about expertise and efficiency.

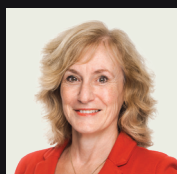
At Inigo, we appreciate everyone is different. We take the time to understand your unique challenges – building a partnership on the foundations of a refreshingly human approach. One that trusts us to lead the way, take decisive action and be a calming influence – when and while you need us.

And it's about proactively working to benefit everyone through considered data analysis and creating innovative, bold solutions based on the lessons learned.

These core principles are underpinned by our responsive, nimble and experienced claims team. By empowering them to make the right decisions at the right time, we aim to provide the best possible outcome for you and your business.

OUR TEAM

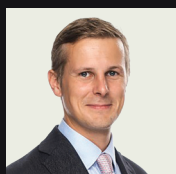
UNDERWRITING



Jane Bennett
Head of Financial
Institutions



Adam Brown
Underwriter



Tom Falkner
Underwriter



Steve Agutter
Head of Claims



Yera Patel
Head of Legal &
Third Party Large
Loss Claims



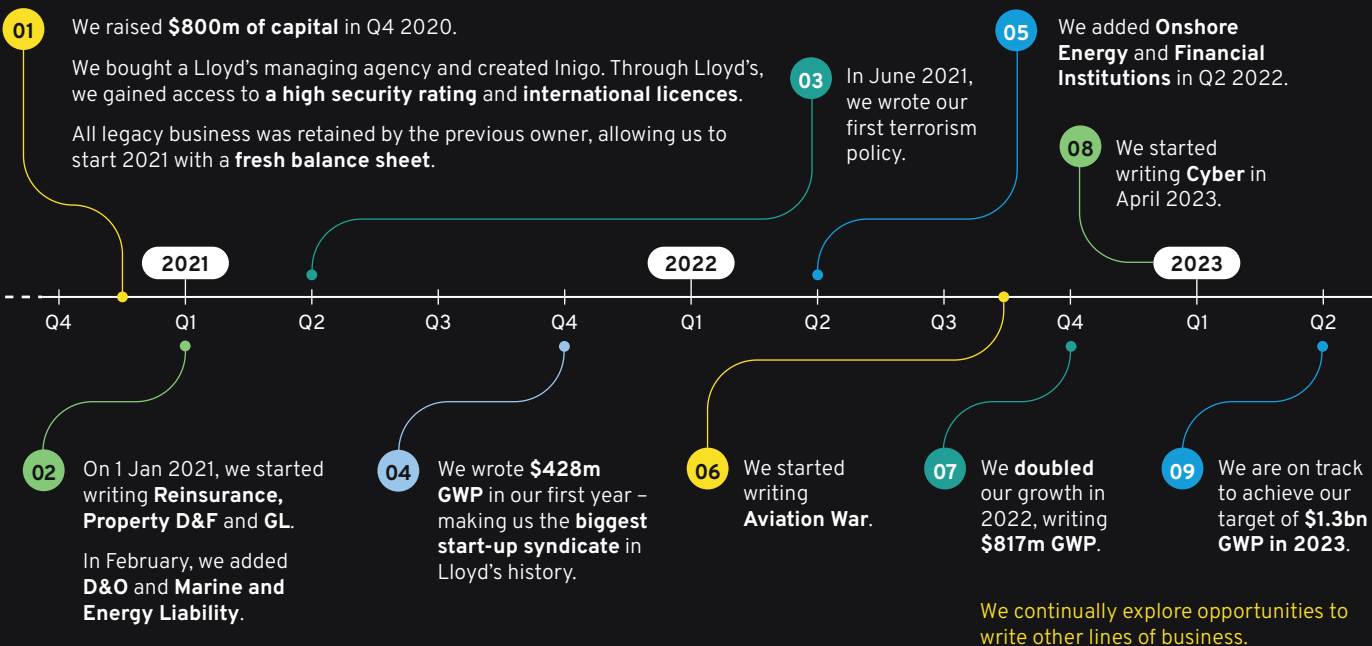
Eleanor Simon
Senior Analyst,
Casualty & Financial
Lines Claims



Victoria Korotova
Casualty & Financial
Lines Claims Analyst

CLAIMS

OUR JOURNEY

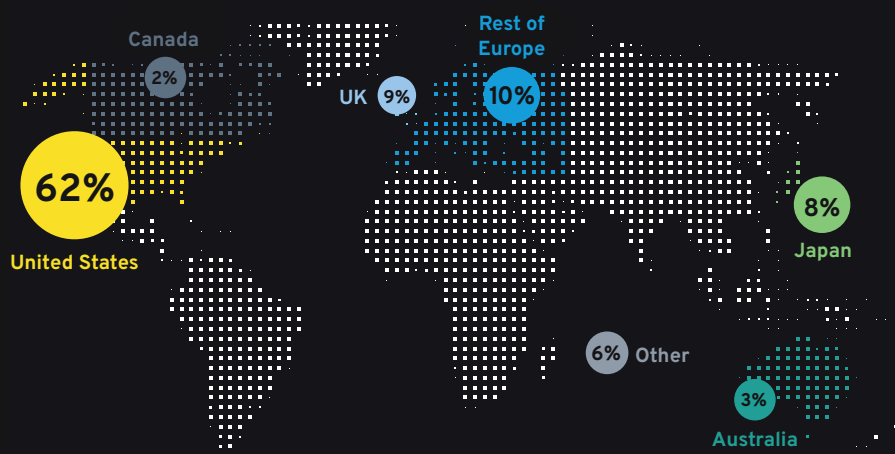


OUR CORE PRINCIPLES

We prefer to provide cover where:

- we have leading underwriting and claims engagement
- every risk can be written individually
- claims expertise is at the heart of our offering
- good underwriters can make a difference and outperform
- data and analytics can make a material difference

Geographic breakdown by GWP



OUR CULTURE

We are **proud** of our culture, and work hard to nurture it. We were **top quartile** on almost every theme in Lloyd's 2022 culture survey, with a **98% response rate**. Our people are **engaged** and **empowered**. We act as **one team**.

We are building a collaborative, agile team, of **analytical decision-makers**. We are committed to learning and sharing, and we will **work together** across business lines to create great results for customers.

GET SMART

We have a relentless curiosity that questions, explores, learns, and continuously strives for excellence

SHARE THE PASSION

We collaborate and communicate our expertise honestly and thoughtfully

PARK THE EGO

We are welcoming and open, and embrace different thinking

RADICAL SIMPLICITY

We are transparent, focused and actively avoid complexity in how we operate

ENVIRONMENTAL, SOCIAL, AND GOVERNANCE

As a young business, we want to play an active part in the conversation on ESG, with our commitments growing as our business grows. We firmly believe that a strong ESG proposition is the right thing to do, creating engagement and value.

We are fully aligned with Lloyd's guidance on ESG, and will not insure thermal coal-fired power plants, thermal coal mines, oil sands and new Arctic energy exploration activities.

We are a new member of ClimateWise. As well as reporting against their principles, we will collaborate with our peers to help the industry move forward on climate risks, opportunities and responsibilities.