

CYBER INSURANCE



WHO WE ARE

Through our Lloyd's syndicate, we work exclusively with the broker intermediary market, serving some of the world's largest commercial and industrial enterprises. Additionally, we provide reinsurance to leading insurers across the globe.

Data science is at the core of everything we do. The data we use and the models we build to run it, offer genuinely different and useful

perspectives on risk, propelling new understanding to enable better decisions.

A blend of experience and ambitious talent, our dynamic people are the heart of the Inigo experience. Our values of radical simplicity and low ego underpin truly exceptional relationships.

CYBER INSURANCE - OUR UNDERWRITING APPETITE

LIMITS OFFERED

10_M
USD

ATTACHMENT

Predominantly
Excess Layers

TERRITORY

Worldwide



APPETITE

- All industries considered with a focus on Fortune 1000

PRODUCTS

- Cyber, Technology E&O and Cyber Property Damage

WHY CHOOSE US?

- Collaborative, innovative solutions for complex risks – worldwide.
- Long-term broker and client partnerships.
- Highly experienced and respected Claims Managers.
- Market-leading, experienced underwriters using real-time data and analytics.

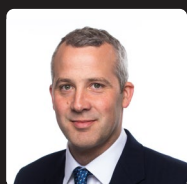
OUR CLAIMS PHILOSOPHY

Visit any insurance company, and you'll see promises about fast payment and helpful people. To be frank, that should go without saying. To us, a high-quality claims experience means so much more than paying valid claims efficiently. It's about appreciating everyone is different and understanding your unique challenges. It's about building a partnership that trusts us to lead the way and take

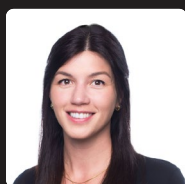
decisive action – when and while you need us. And it's about proactively working to benefit members through analysis and creating innovative solutions. And yes. This philosophy is underpinned by our responsive and experienced claims team – based worldwide to provide visible, real-time support. Because some things really shouldn't remain unsaid.

OUR TEAM

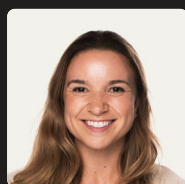
UNDERWRITING



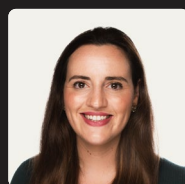
James Creasy
Head of Cyber



Charlotte Marsden
Underwriter



Corinne Cozens
Underwriter

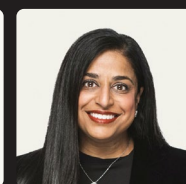


Isabel Roscoe
Underwriter

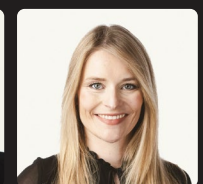
CLAIMS



Steve Agutter
Head of Claims

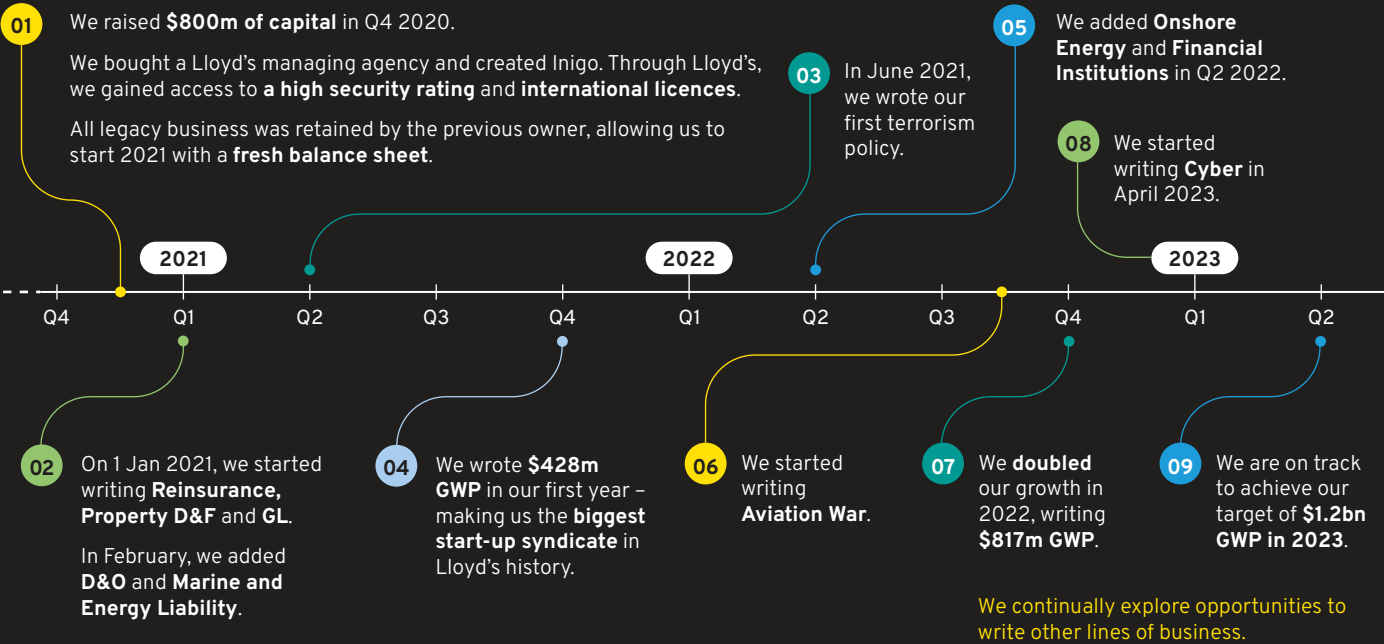


Yera Patel
Head of Legal &
Third Party Large
Loss Claims



Eleanor Simon
Third Party
Claims Analyst

OUR JOURNEY

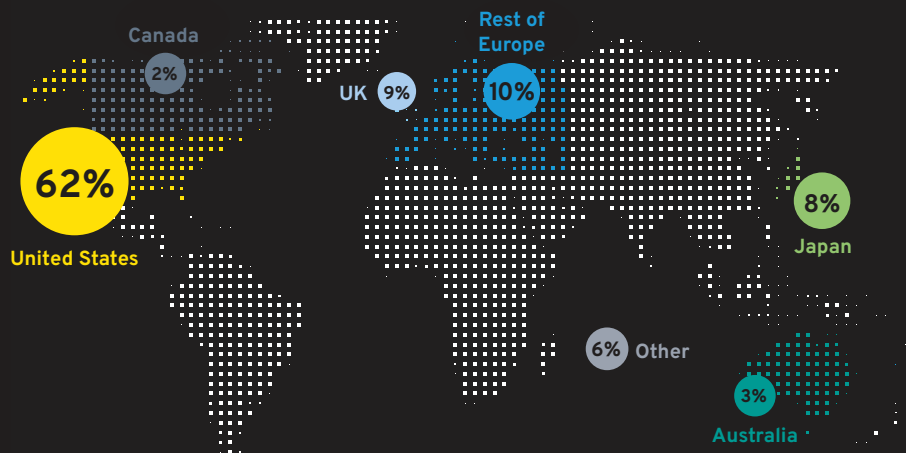


OUR CORE PRINCIPLES

We prefer to provide cover where:

- we have leading underwriting and claims engagement
- every risk can be written individually
- claims expertise is at the heart of our offering
- good underwriters can make a difference and outperform
- data and analytics can make a material difference

Geographic breakdown by GWP



OUR CULTURE

We are **proud** of our culture, and work hard to nurture it. We were **top quartile** on almost every theme in Lloyd's 2022 culture survey, with a **98% response rate**. Our people are **engaged** and **empowered**. We act as **one team**.

We are building a collaborative, agile team, of **analytical decision-makers**. We are committed to learning and sharing, and we will **work together** across business lines to create great results for customers.

GET SMART

We have a relentless curiosity that questions, explores, learns, and continuously strives for excellence

SHARE THE PASSION

We collaborate and communicate our expertise honestly and thoughtfully

PARK THE EGO

We are welcoming and open, and embrace different thinking

RADICAL SIMPLICITY

We are transparent, focused and actively avoid complexity in how we operate

ENVIRONMENTAL, SOCIAL, AND GOVERNANCE

We firmly believe that having a strong ESG proposition is crucial to tackling some of the world's most pressing challenges. As a young business, we're committed to playing an active part – one that expands and evolves as we grow.

We are aligned with Lloyds' ESG guidance and are a new member of ClimateWise.

As well as reporting on our progress based on the ClimateWise principles, we work with our industry peers to raise awareness of climate risk, our collective responsibilities, and the opportunities to contribute to a better world.

