

FINANCIAL INSTITUTIONS



WHO WE ARE

Through our Lloyd's syndicate, we work exclusively with the broker intermediary market, serving some of the world's largest commercial and industrial enterprises. Additionally, we provide reinsurance to leading insurers across the globe.

Data science is at the core of everything we do. The data we use and the models we build to run it, offer genuinely different and useful

perspectives on risk, propelling new understanding to enable better decisions.

A blend of experience and ambitious talent, our dynamic people are the heart of the Inigo experience. Our values of radical simplicity and low ego underpin truly exceptional relationships.

FINANCIAL INSTITUTIONS - OUR UNDERWRITING APPETITE

LIMITS OFFERED

10_M
USD / CAD / GBP / AUD

ATTACHMENT

Primary and
Excess layers

TERRITORY

Worldwide
Focus on US, UK,
Europe, Australia
and Canada



PRODUCTS

- Professional Indemnity
- Directors & Officers
- Crime
- Investment Managers
- Private Equity
- Public Offering of Securities
- Employment Practices Liability
- Fiduciary Liability

APPETITE

We consider all financial institutions including but not limited to:

- Banks
- Insurance Companies
- Investment Managers
- Infrastructure Risks

WHY CHOOSE US?

- Worldwide primary lead underwriting appetite and capability that challenges traditional global carriers
- Market-leading service levels
- Highly experienced claims team and service
- Single, central and nimble underwriting platform
- Technical capability and empowered underwriting decisions
- Active client engagement and the ability to travel
- Long-term strategic underwriting approach
- Real-time data & analytics supporting stable and consistent underwriting
- We aim to say yes

OUR CLAIMS PHILOSOPHY

We believe a high-quality claims experience should offer more than promises about expertise and efficiency.

At Inigo, we appreciate everyone is different. We take the time to understand your unique challenges – building a partnership on the foundations of a refreshingly human approach. One that trusts us to lead the way, take decisive action and be a calming influence – when and while you need us.

And it's about proactively working to benefit everyone through considered data analysis and creating innovative, bold solutions based on the lessons learned.

These core principles are underpinned by our responsive, nimble and experienced claims team. By empowering them to make the right decisions at the right time, we aim to provide the best possible outcome for you and your business.

OUR TEAM

UNDERWRITING



Jane Bennett
Head of Financial
Institutions



Adam Brown
Underwriter

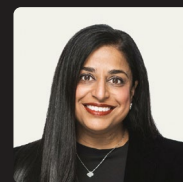


Tom Falkner
Underwriter

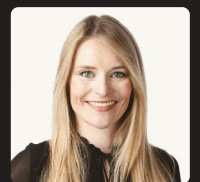
CLAIMS



Steve Agutter
Head of Claims

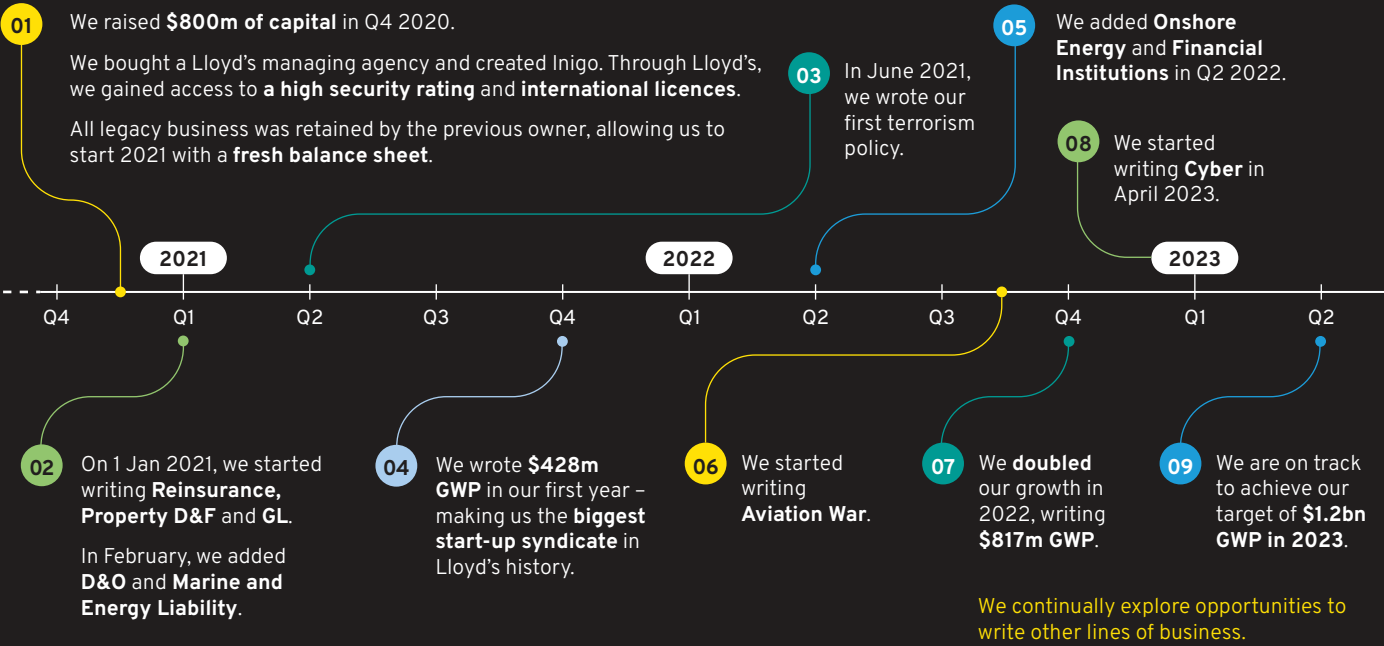


Yera Patel
Head of Legal & Third
Party Large Loss Claims



Eleanor Simon
Third Party
Claims Analyst

OUR JOURNEY

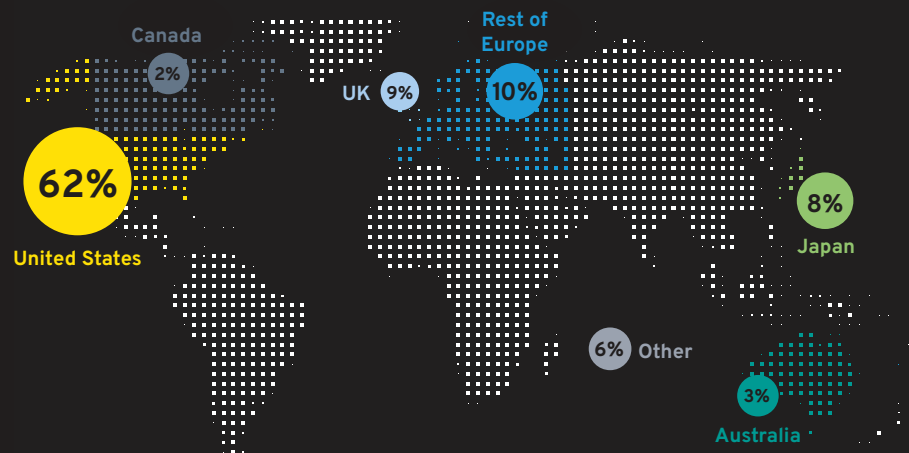


OUR CORE PRINCIPLES

We prefer to provide cover where:

- we have leading underwriting and claims engagement
- every risk can be written individually
- claims expertise is at the heart of our offering
- good underwriters can make a difference and outperform
- data and analytics can make a material difference

Geographic breakdown by GWP



OUR CULTURE

We are **proud** of our culture, and work hard to nurture it. We were **top quartile** on almost every theme in Lloyd's 2022 culture survey, with a **98% response rate**. Our people are **engaged** and **empowered**. We act as **one team**.

We are building a collaborative, agile team, of **analytical decision-makers**. We are committed to learning and sharing, and we will **work together** across business lines to create great results for customers.

GET SMART

We have a relentless curiosity that questions, explores, learns, and continuously strives for excellence

SHARE THE PASSION

We collaborate and communicate our expertise honestly and thoughtfully

PARK THE EGO

We are welcoming and open, and embrace different thinking

RADICAL SIMPLICITY

We are transparent, focused and actively avoid complexity in how we operate

ENVIRONMENTAL, SOCIAL, AND GOVERNANCE

We firmly believe that having a strong ESG proposition is crucial to tackling some of the world's most pressing challenges. As a young business, we're committed to playing an active part – one that expands and evolves as we grow.

We are aligned with Lloyds' ESG guidance and are a new member of ClimateWise.

As well as reporting on our progress based on the ClimateWise principles, we work with our industry peers to raise awareness of climate risk, our collective responsibilities, and the opportunities to contribute to a better world.

